

# Integrate, Operate, Communicate

# VersaLex Trader

## eBusiness Communications Management Platform

Companies may think they have to be big to secure the operational advantages and cost savings of Internet-based communications for EDI, data synchronization, RFID, and CPFR. And some, interested in networking with a number of trading partners, or managing EDI data for small companies, might expect a secure Internet communications server to cost six figures. Not anymore!

That's all changed with Cleo Communications VersaLex™ Trader. VersaLex Trader (**VLTrader**) is a powerful software platform that manages secure electronic transfer of business documents to and from trading community partners over the Internet, through VANs, or over other specialized TCP/IP connections. Using certified, proven EDIINT technology, **VLTrader** combines the secure core communications functionality of AS2, FTP/S, and HTTP/S with communication network configuration and management tools essential to the efficient handling of hundreds to thousands of trading partners and customers.

**VLTrader** features an intuitive graphical user interface that combines integration services, network communications, and trading partner operations all in one package. A comprehensive, scalable business communications strategy that fits the requirements of trading partners in any supply chain community can be deployed with **VLTrader**.

Architected in Java™, **VLTrader** is certified eBusinessReady™ interoperable and runs on a wide selection of platforms and operating systems including Windows, Unix, Linux, and AS400.



**VLTrader** grows with your business. Starting with a few trading partners, a business can easily add new trading partners and community networks regardless of protocol, connection, network, or application. The traditional "EDI Hub and Spoke" network is quickly transformed into a user-centric transaction delivery system, both up and down stream in the supply chain.

**VLTrader** operates behind the firewall on desktop or server. Adequate storage is required for document record keeping and logging transactions. **VLProxy**, residing in the DMZ, functions as a proxy server to **VLTrader** so that no direct communication path is ever open between **VLTrader** and the Internet. Pre-configured hosts, EDI Translator integrations, JDBC interface to legacy systems, and automated file transfers connect and configure **VLTrader** to work with trading communities. **VLTrader** can be administered and operated locally or remotely over web browser. The system administrator configures authorized user access to achieve desired security and access control. Installation takes only a few hours; operational readiness is achieved promptly, as soon as **VLTrader** is configured for the trading partner networks. Start up training and comprehensive support for installation, configuration, and maintenance are included with **VLTrader**.

### AT A GLANCE

## **VLTrader**

- **Easy to install, configure, operate, and manage**
- **Secure, automatic operation behind the firewall**
- **Certified, interoperable internet communications**
- **Integrates with EDI and legacy systems**
- **Delivers flexible, integrated ebusiness processes**
- **Cost effective, extensible, prompt ROI**
- **Supports thousands of trading partners**

# VLTrader

## WEB-BASED OPERATION

Web based system administration allows **VLTrader** to be configured and managed remotely. An authorized user can maintain trading relationships from a central location, or a company can choose to decentralize distributed administration and maintenance among various company divisions. The trading community management functions an administrator can define include trading partners, authorized users, communications protocols, transaction schedules, and operation configurations. Reports, files, and logs are accessible by browser.

## SECURE SYSTEM ACCESS

The system administrator controls edit and viewing access of company personnel to sensitive information and communication operations managed by **VLTrader**, including system configuration, daily operations, and enterprise to trading partner business processes.

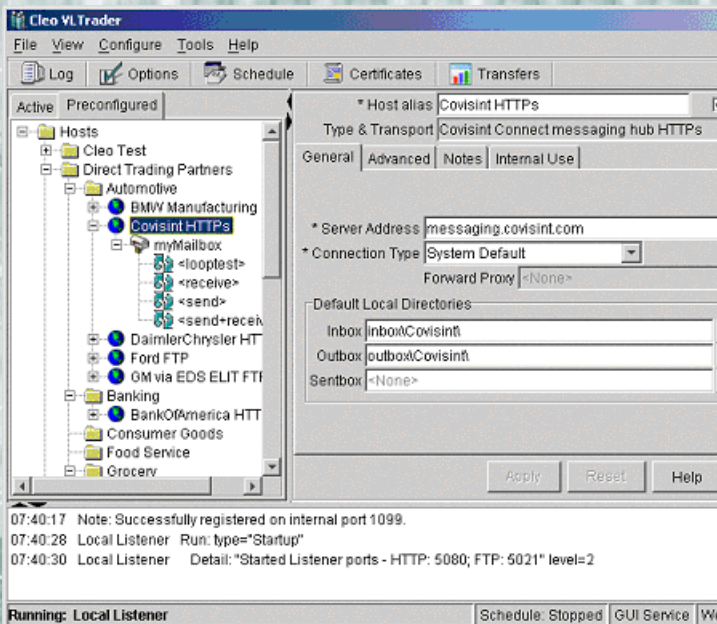
## eBusiness Process Integration

- **Web Services**
- **Audit, Track, Alert**
- **Reports and Logs**
- **EDI Integration**
- **Document Management**
- **Database Integration**
- **External Process Integration**

**VLTrader** is a flexible software platform, based on VersaLex™ certified technology, for secure ebusiness communications between an enterprise and large quantities of partners in a trading community. It works with other enterprise software applications to automate a user defined point-to-point secure communications process, to encrypt mission critical business documents and data, to manage secure receipts, and to log transactions and processing results.

**VLTrader** manages business document communications between the enterprise and the trading community using mailboxes with the appropriate communications protocol for each trading partner in the community. New trading partner configurations are supported with secure internet communications in AS2, FTP/S, HTTP/S, AS3, and ebXML protocols. Over 30 popular EDI Translators are already integrated to **VLTrader** and "generic" integration is easy to implement. Over 50 pre-configured connections come standard with **VLTrader**, including Wal-Mart, Tar-

## Configure Trading Partners



**VLTrader** configures enterprise to trading partner communications with pre-configured and generic connections.

get, Kohl's, Procter & Gamble, Daimler-Chrysler, Ford, Lowe's, UCCnet, Sterling, GXS, IBM, GM, and Covisint.

When set up is completed, **VLTrader** automatically initiates, transacts, and logs enterprise to trading partner communications in real-time; batch processing is also an available selection in order to schedule communications for prescribed or optimum periods. Operations can be monitored, and contingency actions initiated, for success or failure conditions. Results can be filtered and queried for detailed status.

## WEB SERVICES

Companies can integrate their business systems with **VLTrader** using open standards based web services, Java API, command line, or file polling.

## AUDIT, TRACK, ALERT

**VLTrader** can be configured to generate email alerts based on any type of failure, on successful document transmission, or on successful document receipt. **VLTrader** can also be configured to execute a program, script, or operating system command based on the same conditions.

# VLTrader

## REPORTS & LOGS

**VLTrader** generates detailed and summary reports. Detailed reports contain individual records of the time span of the file transmission, send or receive message direction, transmission success or failure status, number of bytes transferred, actual transfer time elapsed, and file name. Detail reports are sortable by record category filters. Summaries of the total number of files transmitted, total bytes transferred, and total elapsed time are available based on the success or failure status and the send or receive direction of the transfers.

**VLTrader** generates and automatically archives detailed log messages for all document transfers. Users can browse current or archived log message files and filter them for priority according to date, time, and eight (8) different message types and levels of detail. Logs can be queried for text strings and sorted by message type to help users locate information quickly.

## EDI INTEGRATION

**VLTrader** allows trading partners to leverage existing investments in EDI Translator software, including Tradelink, Trusted Link for Windows, GENTRAN:Director, Emanio, EDS Asset, TIE Commerce, GXS Desktop EDI, and others. **VLTrader** also supports the transfer and audit of all data types, including XML, EDI, or binary text file formats. Integration makes efficient back-end processing of EDI data possible without the added expense of new software, professional services, or third party consultants.

EDI translator integration is configured from the same user interface that configures trading partner and certificate manage-

ment. Once trading partner profiles are established and EDI job actions like sends and receives are created, integration script files are generated for specific trading partners and job actions, including files required for **VLTrader** and EDI translation software. Thirty leading EDI translation software products are integrated with **VLTrader**, including Sterling's Gentran:Server and Inovis TrustedLink. Additional translators can be supported using the "generic" translator script file generation.

## DOCUMENT MANAGEMENT

Easy access to file transfer audits and reports is crucial to managing private trading partner communications to a public service bureau or trading network. Scanning log files for problems, verifying file transfer status, or validating for billing purposes can be a time consuming process, even with a modest number of trading partners. **VLTrader** simplifies the process with the VLStat file transfer reporting module.

VLStat operates a user interface independent of the **VLTrader**, which can run as a service in the background while VLStat is accessing, filtering, and displaying file transfer status information. Data can be filtered by date range, transfer status, and trading partner. If failed file transfers are configured for display in VLStat, they can be re-run without invoking **VLTrader**. VLStat report generation makes saving or sharing file transfer data easy, including, saving to a directory, archive, or a location accessible to accounting.

## DATABASE INTEGRATION

**VLTrader** supports JDBC and ODBC connectivity for file transfer status data written to external databases, including popular databases like Oracle, MS Sequel, DB2, and Sybase. Access to external database files lets **VLTrader** users customize data queries and reports, and manage larger amounts of complex data, including file transfer status data sharing with other back-end applications.

## EXTERNAL PROCESS INTEGRATION

**VLTrader** integrates to third-party applications using pre- and post-processing scripts. These scripts can be incorporated into send and receive actions using any of the supported file transfer protocols. Scripts intended to execute on the success or execute on the failure of a file transfer can easily be set to apply to all file transfers run for a particular trading partner or just specific file transfers.

## Report Transfers

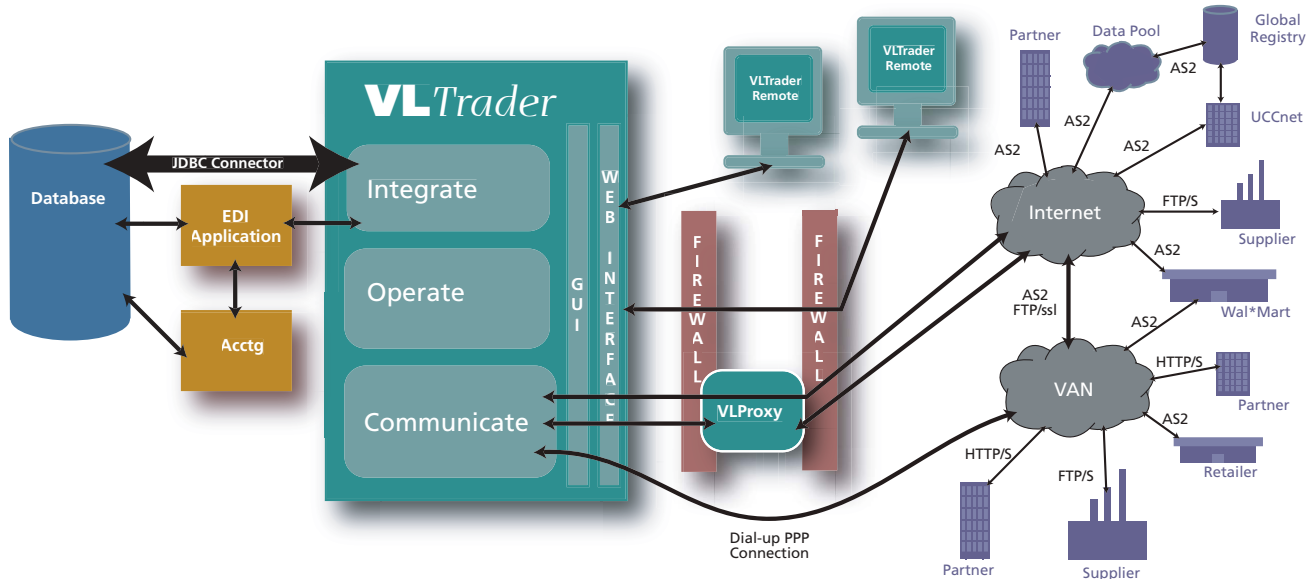
Start Time	Folder	Host	Mailbox	Direction	Status
2004/06/21 06:46:01				receive	Success
2004/06/21 06:47:01				receive	Success
2004/06/21 06:48:01				receive	Success
2004/06/21 06:53:01				receive	Success
2004/06/21 06:54:01				receive	Success
2004/06/21 07:04:28	Gold	Garden Crafts AS2	myMailbox	send	Error
2004/06/21 07:25:24	Gold				
2004/06/21 07:27:01	Gold				
2004/06/21 07:28:01	Gold				
2004/06/21 07:29:01	Gold				
2004/06/21 07:44:59	Silver				
2004/06/21 07:50:09	Silver				
2004/06/21 08:16:03	Gold			send	
2004/06/21 08:17:01	Gold				
2004/06/21 08:18:01	Gold				
2004/06/21 08:19:01	Gold				
2004/06/21 08:20:01	Gold				
2004/06/21 08:21:01	Gold			send	
2004/06/21 08:22:01	Gold			Error	
2004/06/21 10:02:02	Gold				
2004/06/21 10:09:00	Gold				
2004/06/21 10:16:01	Gold				
2004/06/21 10:23:00	Gold				

Transfer ID	AS2 Message ID	Host	Mailbox	Action	Transport	Start Date/Time	End Date/Time	Direction	Status	Filename
AS2-20040621_070426088	CLEOAS2-20040621_120427088@CleoTestUser-GXS_C	Garden Crafts AS2	myMailbox	send	AS2/HTTP	2004/06/21 07:04:26	2004/06/21 07:04:29	send	Error	GardenCrafts.edi

**VLTrader** file transmission results are tracked, audited, and logged. Query and priority filter reporting are available on line.

# VLTrader



VLTrader combines the secure core communications functionality of AS2, FTP/S, and HTTP/S with communication network configuration and management tools essential to the efficient handling of hundreds to thousands of trading partners and customers.

## Trading Community Network Operations

- Trading Community Management
- Network Management
- Certificate Management
- Web Administration

### TRADING COMMUNITY MANAGEMENT

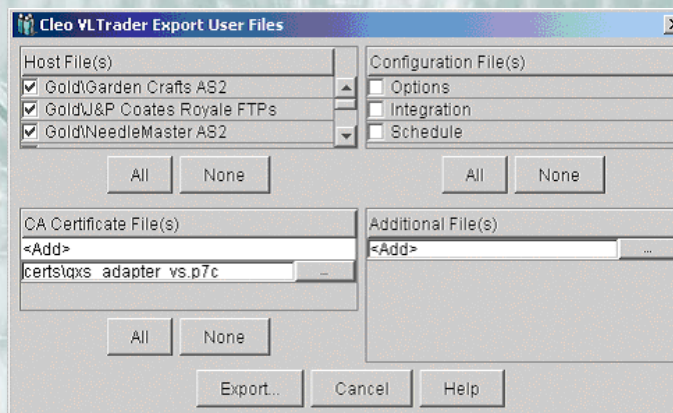
VLTrader's trading partner services include configuration, management, integration, and communications process controls that establish and maintain trading community communications without expensive IT talent or protracted installation, configuration, and testing. Trading partner configuration begins with over 50 pre-configured trading partner (host) profiles, including those of major retailers like Wal-Mart and Target, VANs like GXS, IBM, and Sterling, and public networks. Custom profiles are easily created by using "generic" host configurations for each of the supported file-transfer protocols: AS2, FTP, FTP/S, HTTP, and HTTP/S. New trading partners configure to the trading community network in just minutes.

VLTrader is the control required for establishing end-to-end network communication processes, configuring the peer-to-peer secure Internet connections, and automating execution between the enterprise and each and every trading partner. It manages automated communications, and tracks and reports subsequent results which are available prioritized by a number of select filters.

### NETWORK MANAGEMENT

VLTrader can configure and manage a VersaLex enabled trading community with exported zip file bundles of host XML files, translator integration files, and public key portions of digital certificates. The bundled file can be imported into the trading partner's LexiCom or VLTrader directly from the user interface, resulting in a fully functional, activated communication profile. VLTrader managed networks significantly streamline communications, network roll-out, and eBusinessReady extensibility up and down the supply chain.

### Manage Network Profiles



VLTrader manages VersaLex client trading partner configurations.

# VLTrader

## CERTIFICATE MANAGEMENT

Secure communications between trading partners is accomplished by the **VLTrader** Certificate Manager for X.509 certificate generation, and export and import of **VLTrader** and partner public keys. Generation of digital certificates results in creation of public and private key pairs that are the foundation of secure EDIINT communications.

Exchange of public keys between trading partners in an AS2 communications network with **VLTrader** as the AS2 server and LexiCom or **VLTrader** as the AS2 client, is as simple as clicking a button in the software user interface. Emailing certificates is unnecessary when VersaLex software is resident at each node of the trading community network. A certificate summary is available on demand.

## WEB ADMINISTRATION

Network requirements, security considerations, and legacy applications mandate all new business applications provide flexibility in installation location, and local and remote system management. **VLTrader** gives server administrators and EDI staff additional access to **VLTrader** services from a web browser connected over a LAN or the public Internet, including those server installations that do not natively support a GUI.

Authorized access to **VLTrader** services from a web browser on a remote workstation is controlled by user name and password authentication. Authorized users interface with **VLTrader** as if it were installed on their local computer.

System administrators have flexibility to operate **VLTrader** on a server that supports complementary software like EDI translation, and to maintain corporate network integrity and security commitments. Access to the secure server room is not required.

## Secure Communications

- **Certified Interoperability**
- **Internet Protocols**
- **Data Types**
- **Security**
- **Scheduling, Alerts & Alarms**
- **Redundant Connections**
- **DMZ Security**

## CERTIFIED INTEROPERABILITY

The heart of **VLTrader's** network services is VersaLex, an EDI over the Internet (EDIINT) engine that has demonstrated AS2 interoperability in multiple rounds of Drummond Group testing. Interoperability testing has earned VersaLex and **VLTrader**

## Track Digital Certificates

User Certificate	Self-signed	Common Name	Expiration	Usage	HostMailbox
CIRCUIT CITY	Yes	ae2.circuitcity.com	2005/11/19	Not used	
CLEO	Yes	www.cleo.com	2006/08/18	Not used	
DESKTOP	Yes	10.10.101.24	2006/03/10	Signing/Encryption	Local Listener

Trusted CA Certificate	Root	Common Name	Expiration	Usage	HostMailbox
certs\her2aa.cer	Yes	VeriSign Individual...	2004/01/07	Implicitly trusted	
certs\McLane.p7b	Yes	AS2TEST	2004/02/13	Implicitly trusted	
certs\gxs_adapler_vs.p7c (3)	No	ICS AS2 Production	2004/06/04	Implicitly trusted	
certs\edcommissaries.deca.mil	No	edcommissaries...	2005/03/26	Implicitly trusted	
certs\wmdkde_tst_07_09-03.cer	Yes	Brenda Warren	2005/07/07	Implicitly trusted	
certs\IBM_PkI.certificate.cer	No	iddx.host.com	2005/11/02	Implicitly trusted	
certs\CLEO.cer	Yes	www.cleo.com	2006/01/15	Implicitly trusted	
certs\LAPTOP.cer	Yes	10.10.101.71	2006/03/10	Implicitly trusted	
certs\supplier.cer	Yes	www.supplier.com	2006/06/21	Encryption	California Creation...

**VLTrader Certificate Summary** provides certificate usage information for each trading partner.

eBusinessReady™ and UCCnet certification. An exhaustive series of tests guarantees all certified software can exchange files using AS2 with other certified AS2 software products. Companies developing comprehensive Internet-based communications can rely on certified software products to work everywhere!

Continual investment in interoperability testing, certification, third party encryption tool sets, and Internet standards development guarantees **VLTrader** meets current and future communication requirements, so it delivers on the promise of EDIINT as VANs, service bureaus, and trading community servers come on line.

## INTERNET PROTOCOLS

In addition to AS2, **VLTrader** supports secure file transfer protocols and diverse data file formats. FTP and HTTP are included in both the clear or non-secure mode, as well as the Secure Sockets Layer (SSL) and Transport Layer Security (TLS) mode. These protocols connect trading partners and larger networks over dedicated Internet or dial-up connections to Internet Service Providers (ISPs). Dial-up point-to-point protocol (PPP) connections can also be made to private network addresses not accessible over the public Internet. It's easy to communicate directly with all your trading partners.

## DATA TYPES

Document exchange is not limited to EDI formatted files, but includes secure transmission and receipt of X12 and EDIFACT EDI, XML, plain text, and binary files. Documents can be routed over Peer-to-Peer or Hub and Spoke networks. Carbon copies of documents can be sent to multiple recipients independent of network or file type.

# VLTrader

## SECURITY

Network security is provided by integrated toolsets that utilize X.509 digital certificates, public key exchange, symmetric key encryption, digital signatures, and message acknowledgements. All commonly encountered symmetric key, public key encryption algorithms, and signature algorithms are supported including 168-bit 3DES and signature algorithms, SHA-1 and MD5.

## SCHEDULING, ALERTS & ALARMS

VLTrader manages communications automatically with an integrated scheduler and email alert options. Using time-of-day and day-of-week, the user can optimize network responsiveness in batch mode. If near real-time is a requirement, then AutoSend scheduling mode will initiate file transfers whenever mailboxes are populated with new files. All file transfer job actions can be configured to provide email notification of successful or failed data exchange to administrators.

## REDUNDANT CONNECTIONS

VLTrader provides redundant back up options as part of a comprehensive business communications strategy for times when Internet reliability affects mission-critical document transfers. Automatic communications can be established using less susceptible protocols, up to and including dial-up FTP, to provide fail-safe communication without significant delay.

## DMZ SECURITY

VLTrader network services need not affect a company's internal information technology security. VersaLex Proxy may be installed between two firewalls in the DMZ to receive inbound TCP/IP session requests from trading partners, then pass these requests through a control channel to VLTrader operating behind the interior firewall. VLTrader initiates connection to VLProxy in an outbound mode to receive the messages from the business partner. No messages or private keys are exposed on the Internet, and no inbound FTP or HTTP ports are open at the internal firewall.

## Partner with Cleo

Cleo is the partner for building comprehensive trading community communications. Over 20 years, Cleo has been the choice of thousands of companies. VLTrader delivers secure Internet communications and real ROI network hubs expect.

## SERVICE AND SUPPORT

### Product Support

Support plans are tailored to meet the technical and operational

requirements for a variety of network deployments. Standard and Platinum Support employ an experienced, highly respected Cleo technical support team. Most trading partners will be very satisfied with Standard Support, though some, new to EDIINT communications, technically advanced, or with mission-critical operations, may need Platinum 24/7 coverage.

### Installation and Configuration

Installation, configuration, and training is provided as either an on-site or web-based, phone-supported service. Services include server installation, EDI translator integration, live communication testing, and connection to a number of trading partners. The number of licensed connections determines whether on-site or remote services are appropriate.

### Training, Consulting Services

Additional training, consulting services, or network provisioning are available on request. Consult a Cleo representative for information.

### Warranty, Product Upgrades

VLTrader is warranted for one year to perform to documented specifications. Upgrades are provided as Internet downloads to all licensed users with current support subscriptions. VLTrader provides users quick access to the latest in new protocols, additional ease-of-use features, and powerful integration tools. As EDIINT communications evolve, count on VLTrader for future-proof communication, operation, and integration solutions.

## Technical Support

- **Support, Configuration, Upgrades** - including documentation, FAQs, and installation test server connection
- **Standard Support** - 2 hour response time
- **Platinum Support** - 1 hour response time, 24 x 7
- **Installation, Configuration, Training** - on-site or web-based with phone support
- **Professional and Consulting Services**
  - Program Management
  - Provision trading community network
  - Customization
- **Warranty** - 1 year warranty

# Technical Specifications

## PLATFORMS

- 100% Java v1.4
  - Java Runtime Environment (JRE) provided with installation
- Windows 2000, XP, 2003 (Windows 2000/3 Server strongly recommended).
- AIX v4.3.3+
- HP-UX 11i
- Solaris SPARC version 2.6, 7 8, 9
- Red Hat Intel Linux 6.1+

## SYSTEM REQUIREMENTS

- Pentium 4, 2.4 GHz CPU or equivalent
- 1 GB DRAM minimum
- 500 MB disk storage minimum, plus up to 500 MB per trading partner depending on user specified file storage requirements
- Graphical User Interface (GUI)
- Properly configured Internet connection
- 100 MB/s network connection (10 MB/s minimum)

## SYSTEM ADMINISTRATION & SECURITY

- Web-Based Operation
- Secure System Access - user access control for:
  - Edits
  - Viewing

## INTEGRATION SERVICES

### Audit & Alert Management

Process details and alerts by

- Pass or Fail
- Transaction Details
- Diagnostic Details

### Audit Filters

Track document movements by

- Start Time
- Folder
- Host or Connection
- Mailbox
- Transmission or Receipt
- Success Status
- File Name

### Reports

Sort and filter options for

- Detailed file transfer reports
- Summary file transfer reports

### Log Levels

View log documents by

- Auto Archiving
- Text Searches
- Sorting
- Filtering by Message Type (8)

### EDI Translator Integration

31 EDI translator integrations including

- Agilisys AutoRelease AS/400
- AIM Vision
- EDI Engine from 123 EDI
- Edisoft Merchant & Merchant Express
- EDS' EDI Asset
- Emanio's Trading Partner Desktop
- Genzlinger Release/Shipment Communications
- GXS' Application Integrator™
- GXS' Desktop EDI™
- Inovis TrustedLink™ AS/400, Enterprise, Windows
- Jonar Apparel System (JAS)
- Softshare ECS™
- Softshare Vista™
- Sterling's Gentran:Director,
- Sterling's Gentran:Server (Windows, UNIX, AS/400)
- TIE Commerce EDGE
- TIE Commerce eVision
- TIE Messaging Portal
- TIE Quickstart
- Trinary EDI WINDOWS™
- vSync EDI for Great Plains

### Database Integration

JDBC connectivity to databases like MS SQL Server, Oracle, DB2 SyBase, Informix, FoxPro, MySQL and others.

### External Process Integration

Integrate external pre-/post-processes into file transfer sessions

- Execute on fail
- Execute on successful sends
- Execute on successful receipts

## TRADING PARTNER SERVICES

### Partner Management

- Configure and activate partner profiles from GUI or browser
- Profiles searchable by partner or mailbox

### Network Management

- Import and export configurations to and from **VLTrader** and LexiCom

- Host and trading partner configurations and certificate files are zip bundled for secure transfer and installation

### Certificate Management

- Generate, import, and export X.509 v3 digital certificates
- User defined certificate authority managed by Certificate Signing Request

### Web Administration

- Remote management from inside or outside firewall
- Supports non-GUI configuration and operation

## Pre-configured Trading Partners

Over 50 including:

- AAFES AS2
- ASDA AS2
- ANX FTP
- BofA HTTP/S
- BMW FTP/S
- DaimlerChrysler HTTP/S
- DeCA AS2
- Dollar General AS2
- ECXpress FTP/S
- EDI\*Express
- EDS ELIT FTP/S
- Ford FTP
- GM via EDS\*ELIT
- GXS ICS AS2, FTP/S
- IBM AS2, FTP Dialup, IE FTP/S
- ICC.NET AS2
- Kleinschmidt AS2
- Lowe's AS2
- MCI FTP/S
- McLane AS2
- Meijer AS2
- Michaels FTP/S
- Sterling Commerce AS2, FTP
- Target AS2
- UCCnet AS2 - certified
- Wal\*Mart AS2
- Winn-Dixie AS2

## NETWORK SERVICES

### File Transfer Protocols - AS2, FTP(S), HTTP(S)

- Peer-to-peer eBusinessReady AS2
- Client FTP(S), HTTP(S)
- Server AS2, FTP/S @v2.1.8

### Data Types - EDIFACT and X12

EDI, XML, plain text, binary

### File Level Security - X.509 v3 certificate-based PKI Encryption and signing algorithms

- DES 56 bit
- 3DES 168 bit
- DESX 120 bit
- RC2 1024 bit
- RC4 2048 bit
- RC5 2040 bit
- SHA-1
- MD5

### VLStat Document Management

- Auto data capture and log filing
- Error detection and reporting
- Query & display file transfer status data
- Filter report on user-defined parameters
- Resend failed transfers from VLStat

### Network Connection Types

- Network-based Internet connection
- Dial-up Internet connection
- Dial-up PPP connection

## Network Redundancy

- Network-based Internet connections
  - Dial-up Internet, private network connections
- ### Network Level Security - VLProxy in DMZ limits inbound port network exposure and protects private keys

### File Transfer Options

- Carbon Copy to multiple recipients
- AutoSend - populating the outbox initiates file send
  - Time and day
  - Elapsed interval
- Email alerts
  - Email on fail
  - Email on success

## ABOUT CLEO

Cleo Communications provides integrated, reliable, communication centric e-business products and services for mission critical applications. Cleo products and services derive from a solid foundation in reliable, secure data transfer products that enable users to establish and manage communications sessions automatically, and integrate communications with e-business applications. Over 100,000 installations in manufacturing, retail, healthcare, financial, automotive, and other markets rely on Cleo products.

## CLEO COMMUNICATIONS

4203 GALLERIA DRIVE  
ROCKFORD, ILLINOIS 61111  
PHONE . 815 . 654 . 8110  
FAX . 815 . 654 . 8294

180 LITTLE LAKE DRIVE  
ANN ARBOR, MICHIGAN 48103  
PHONE . 734 . 913 . 6950  
FAX . 734 . 913 . 8125

COLUMBUS, OHIO  
PHONE . 614 . 781 . 0859  
FAX . 309 . 276 . 9365

1 . 800 . 233 . CLEO  
WWW . CLEO . COM

